

MushMon

Release 1.1

Mushroom crop graphing and management system

Program by: Martyn Sutcliffe

Date: 24/07/02

Manual by: Gary Sutcliffe

Date: 6/08/02

CONTENTS

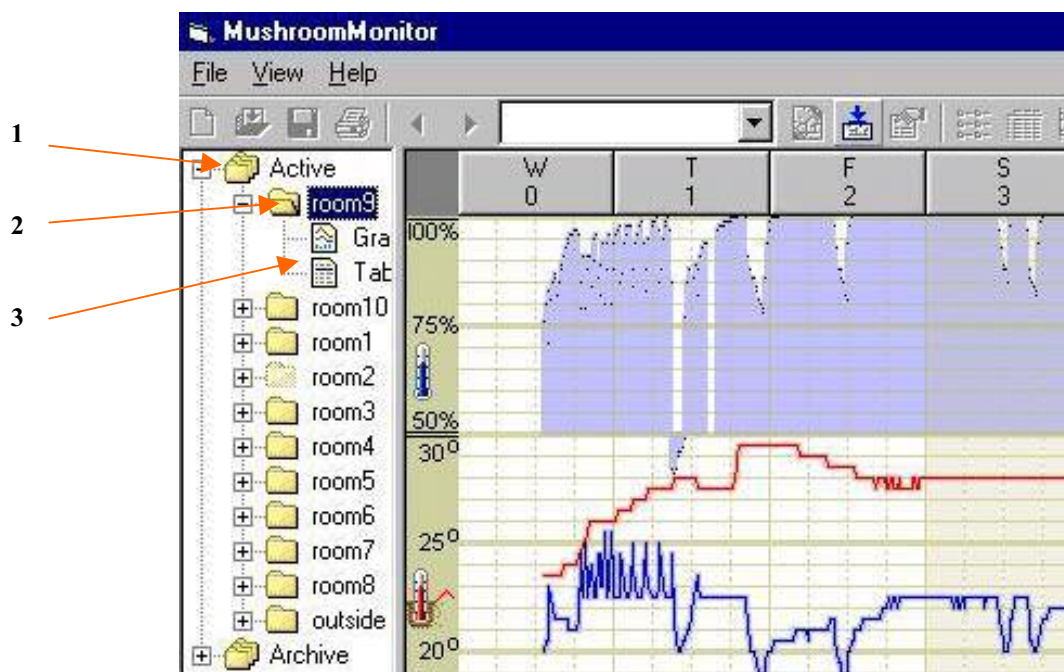
INTRODUCTION	3
VIEWING A CURRENT CROP DETAILS	4
VIEWING ARCHIVED CROP DETAILS	5
VIEWING GRAPHS	6
VIEWING READINGS DATA	7
VIEWING CROP NOTES	8
STARTING A NEW CROP	9
ENDING A CROP	10

Introduction

MushMon is designed as a graphing and crop management system to be used alongside the Seron environment control and monitoring system. This system has been designed around mushroom farming but could be adapted for other areas.

Viewing a current crop details

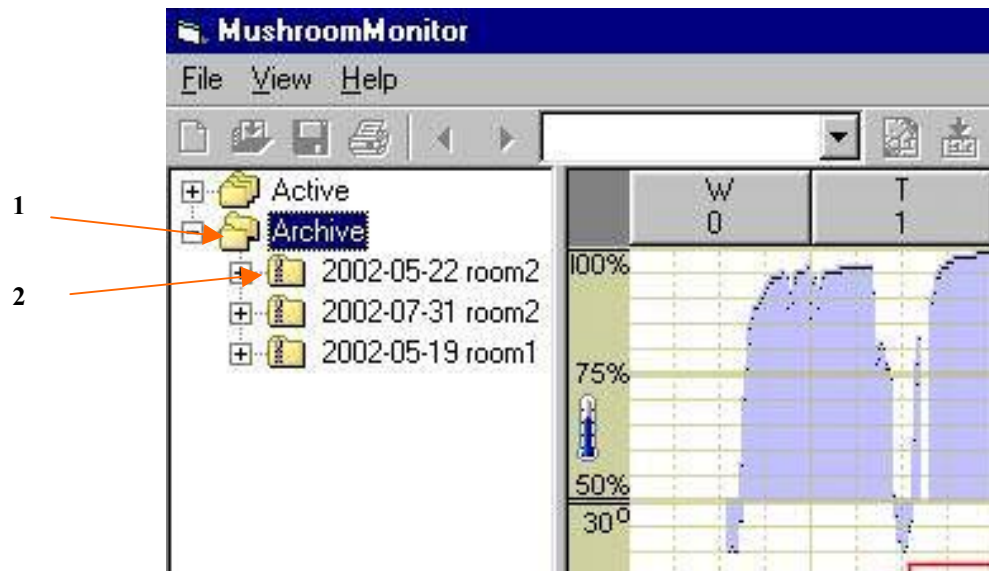
1. If any of the room folders can not be seen double click (with left mouse button) on the Active folder, the room folders should then appear
2. To view the graph, readings data, or crop notes on a current crop, click on the folder labelled with the room number the crop is in.
3. The graph, readings table or notes can be viewed by clicking once on the appropriate label in the current selected room's folder.



Viewing archived crop details

1. By double clicking (with left mouse button) on the Archive folder, the archived crop folders should appear. The folders are labelled with the date the crop was loaded and the room which the crop was in.
2. To view the graph, readings data, or crop notes on an archived crop, click on the folder labelled with the crop you wish to view.

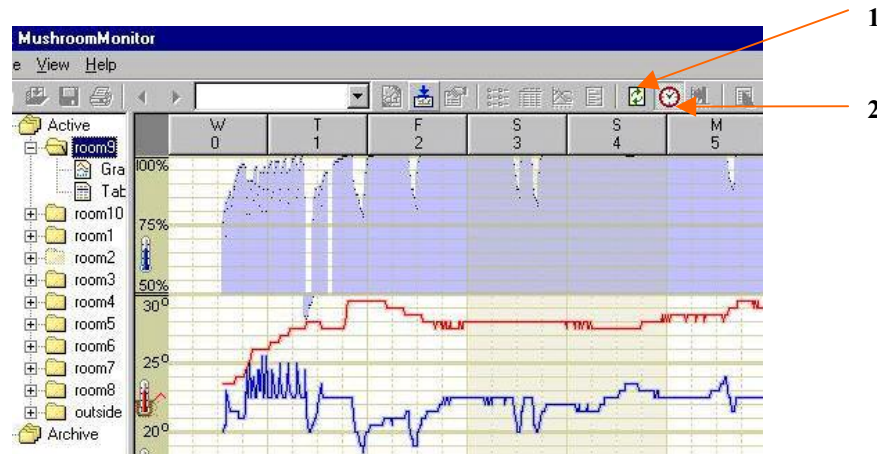
The graph, readings table or notes can be viewed by clicking once on the appropriate label in the current selected crop's folder (as with active crops).



Viewing Graphs

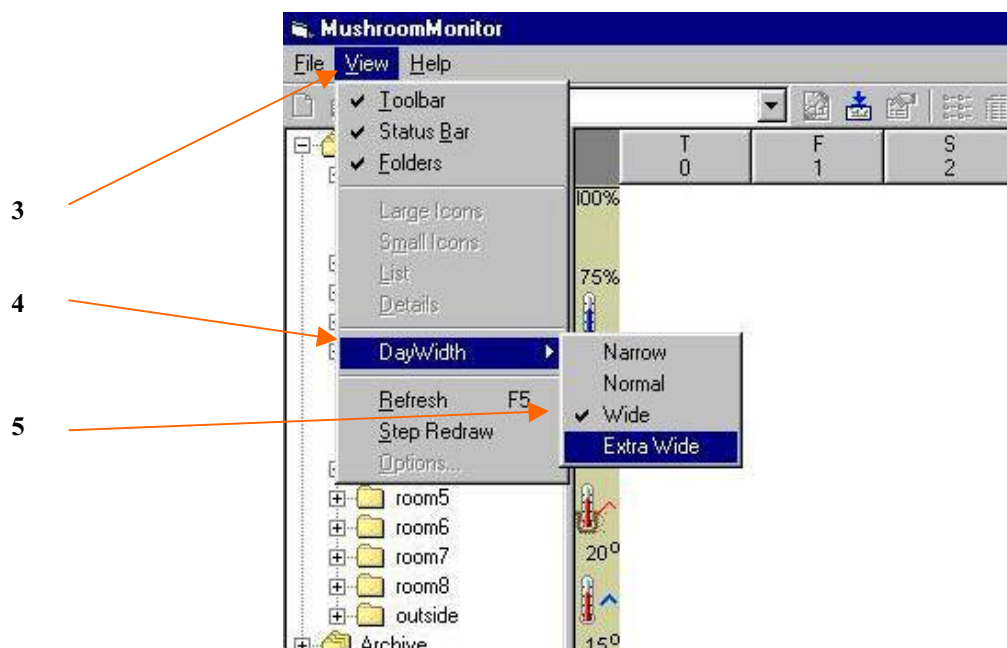
Select a graph to view from either the active or archived crops as explained in the previous two sections.

1. To refresh the graph click once on the refresh button.
2. To automatically refresh the graph click the auto refresh button. While the refresh button appears depressed the graph will refresh the graph every minute. Click on it again to turn of the auto refresh.



3. To change the time scale (Day Width), click once on view
4. then click once on Day Width.
5. A choice of widths should appear to the right of Day Width, click once on the required width (a tick should appear beside the selected width).

Narrow – displays about a six weeks
 Normal – displays two to three weeks
 Wide – displays about a week
 Extra Wide - displays a day or two

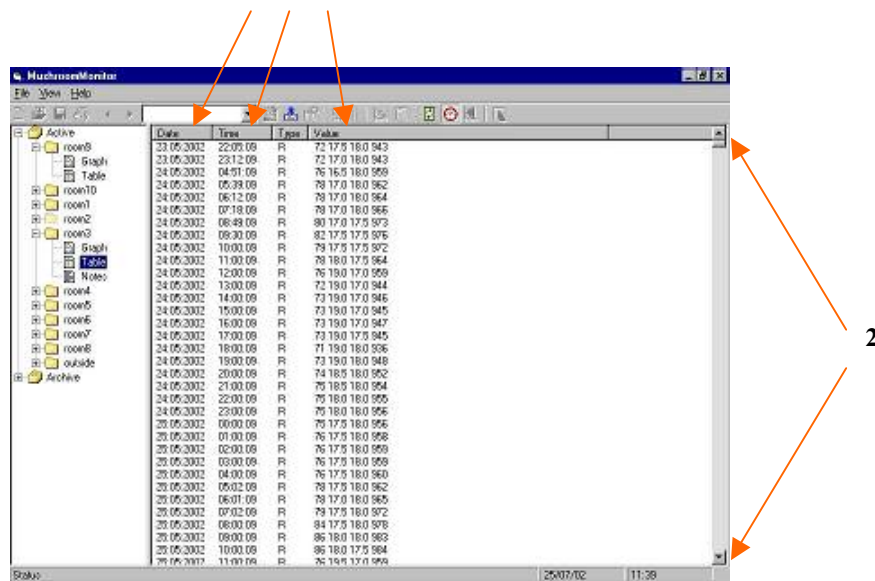


Viewing readings data

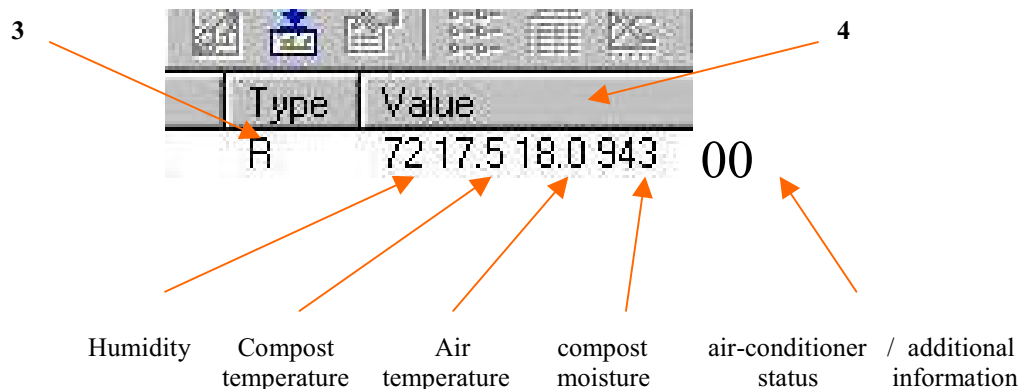
Select a table to view from either the active or archived crops as explained in the previous sections.

1. The table shows the date, time and reading vales or an added comment.
2. Two move up and down the readings list click on either the up or down arrows.

1



3. The Type identifies whether it is a reading or other note (R for reading).
4. The values show the humidity, temperature, compost moisture and air-conditioner status.



First digit

- 0 Off
- 1 Fan running
- 2 Cooling cycle
- 3 Heating cycle

Second digit

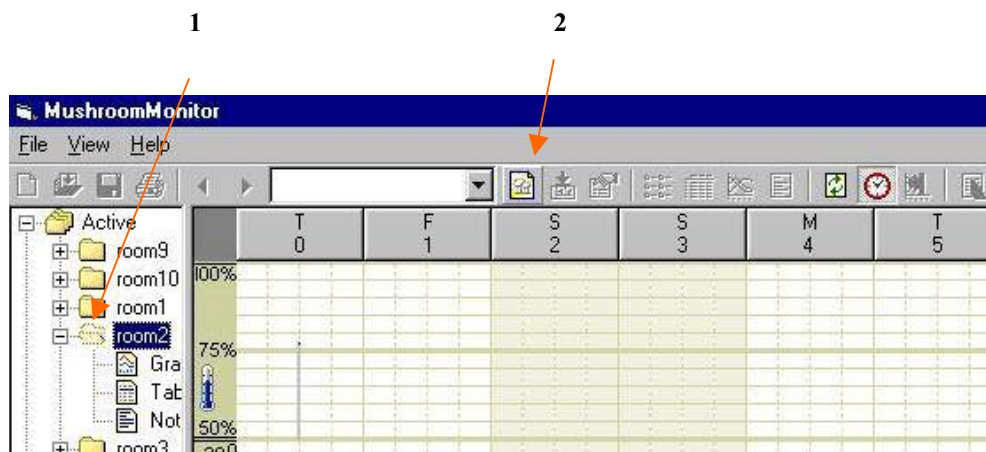
- 0 Humidity stat Off
- 1 Humidity stat On

Viewing crop notes

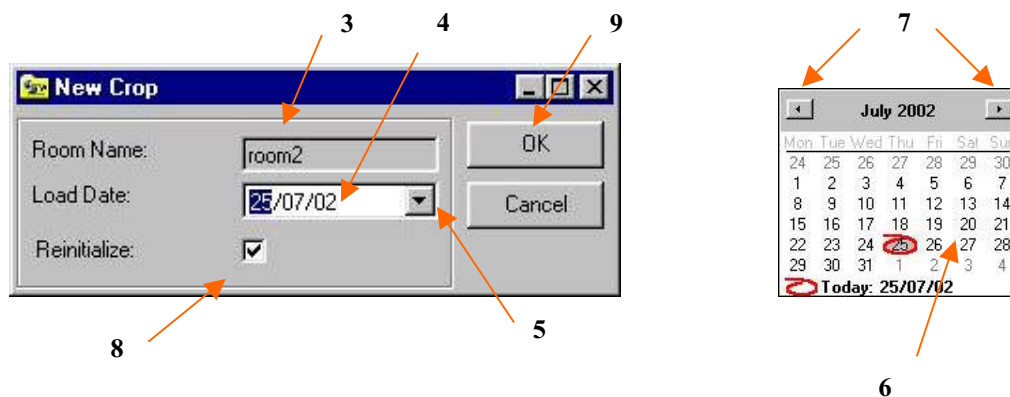
Not yet fully implemented

Starting a new crop

1. A new crop can only be started if a room is marked as unloaded (the room folder should appear a lighter colour). If the room is still loaded it must be archive first, see the ending a crop section to do this.
Click on the folder for the room with the new crop.
2. The new crop picture should show. To load the room click once with the left mouse button on the new crop picture. New Crop window should now appear.



3. The room name should appear as the room to be loaded if it is not click cancel and select the correct room
4. The load date is the date the room is/was loaded, it shows the current date as the default value.
5. If the load date is to be different from that shown click on the down arrow to the right of the date, a calendar should now appear.
6. click on the date required,
7. If the month needs to be changed this can be done by clicking on the left or right arrows beside the month.
8. If the re-initialise box is normally ticked this means the graph and readings will be cleared and a fresh page will start from today. If you do not wish to clear the readings for that room before today click on the tick box to remove the tick.
9. When finished click OK

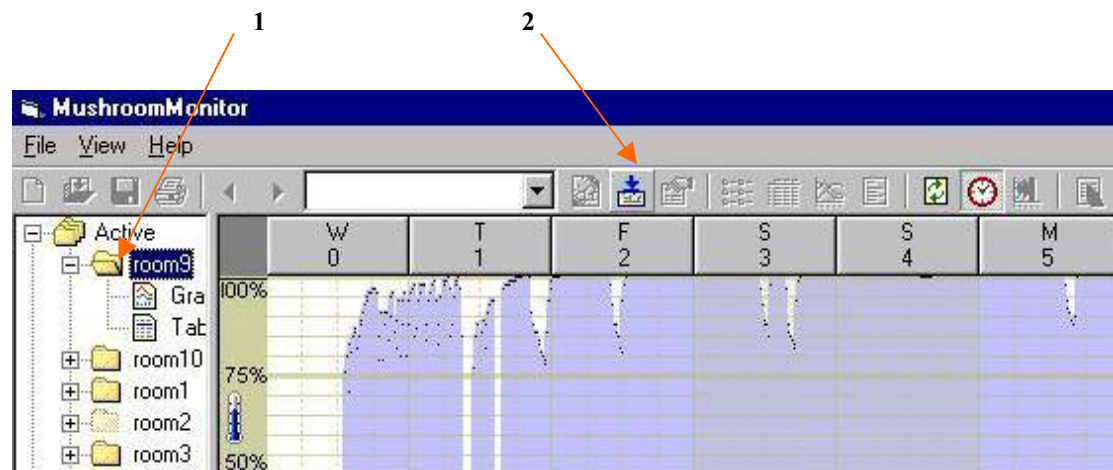


Ending a crop

Once a crop has finished the room needs to be archived to save that crops information. Archiving a crop can only be done if the room has already been loaded (the room folder is full yellow).

1. To archive a crop click once on the room's folder to be archived
2. The archive room button should now be displayed. Click on this once.
3. If the crop record is less that seven weeks a warning appears, this is just a confirmation. Check the room selected is correct and click Yes if it is. Clicking No will cancel archiving this crop.

The crop is now archived with the date and room number as the folder name.



Additional Notes